

Special Points of Interest

- New Rochelle was the 5th safest city its size nationwide in 2008. Marks the ninth consecutive year as one of the five safest. (source-USDOJ “Crime in the United States”)
- Responded to over 54,000 calls for service
- Part 1 crimes decreased 15% from 2008
- Lowest Part 1 crimes total since 1961
- Lowest crime rate among similar municipalities in Westchester County as well as similar municipalities throughout the state
- Received Automobile Club of America Community Traffic Safety Award for 15th consecutive year
- Implemented Gang Resistance and Education Training Program

The City of New Rochelle Police Department Annual Report 2009



Patrick J. Carroll
Police Commissioner

Anthony D. Murphy
Deputy Police Commissioner



CONTENTS

Mission Statement	3
Organizational Chart	4

COMPARISON STATISTICS

Part 1 Crimes	5-6
Total Arrests	7
Crime Arrest Index	7
Drug Arrests	7
Juvenile Arrests	7
Arrests	8
Traffic Enforcement	9
Parking Enforcement	9
Driving While Intoxicated	9
City Code Enforcement	9
Crime Rate - Similar Municipalities Nationwide	10
Crime Rate - Similar Municipalities Statewide	11
Crime Rate - Westchester Municipalities	12

PERSONNEL

Department Demographics	13
Sworn Personnel By Rank	13
Civilian Personnel By Title	13
Sworn Personnel Age	14
Sworn Personnel Longevity	14
Department Personnel By Division	15

POLICE SERVICES DIVISION

Patrol Tours	16
Calls for Service	17
Driving While Intoxicated Arrests By Tour	17
Taxi Licenses	17
Police and Community Together (PACT)	18
Juvenile Cases	18
Police-Community Events	19-20
Community Resources Coordinator	20
New Roc City Detail	21
Special Operations Unit	21-22
Traffic Unit	21-22

New Rochelle Police Department

CRIMINAL INVESTIGATIONS DIVISION

Organization/Personnel	23
Investigations	24
Arrests	25
Forensic Unit Activity	25

STAFF SERVICES DIVISION

Organization/Personnel	26-27
------------------------	-------

INTERNAL AFFAIRS UNIT

Organization/Investigations	28
-----------------------------	----

QUALITY ASSURANCE UNIT

Organization/Purpose	29
----------------------	----

NEW ROCHELLE POLICE FOUNDATION

Purpose/Programs	30
------------------	----

New Rochelle Police Department Patch	31
--------------------------------------	----



Marine II breaking up ice in the New Rochelle Harbor

Mission

The mission of the New Rochelle Police Department is to provide a professional community orientated police service designed to protect life and property and maintain order while assuring fair and equal treatment to all.

Vision

We will provide a quality police service that merits the public's trust and ensure the overall success and general welfare of the community.



Values

Ethics:

We will demonstrate integrity and honor in all our actions

Valuing People:

We will treat everyone with dignity and respect, protecting the rights and well being of others

Loyalty:

We will be loyal to the community, to the department, and its members, and to the standards of our profession

Fairness:

Our decisions will be balanced—moral, legal and without personal favoritism

Authority:

We recognize that our authority is derived from the people we serve

Diversity:

We appreciate one another's differences and recognize that our unique knowledge, skills, abilities and backgrounds bring strength and character to our organization

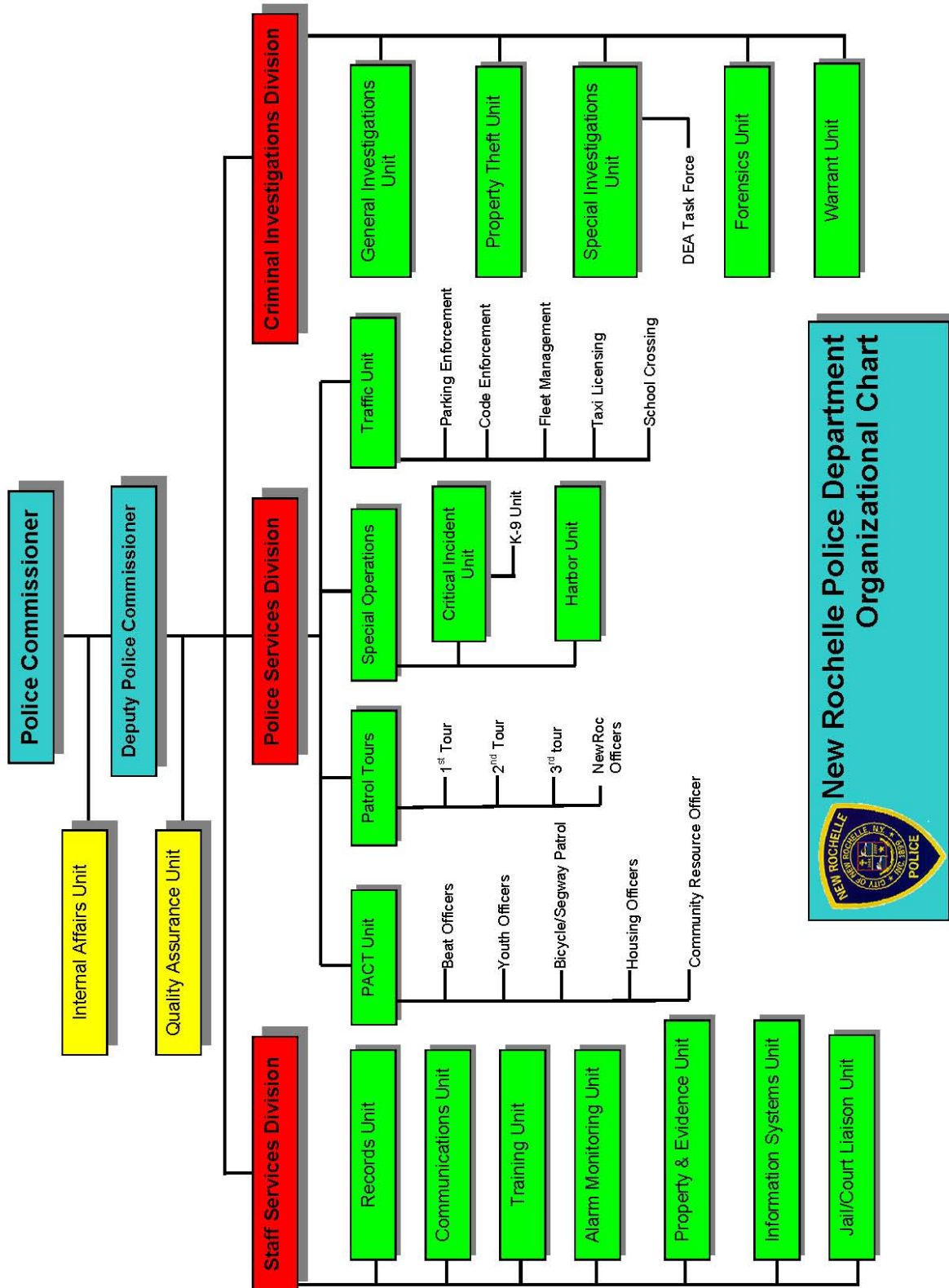
Commitment:

We believe that our time spent in the workplace should be devoted to the delivery of quality police services

Conduct:

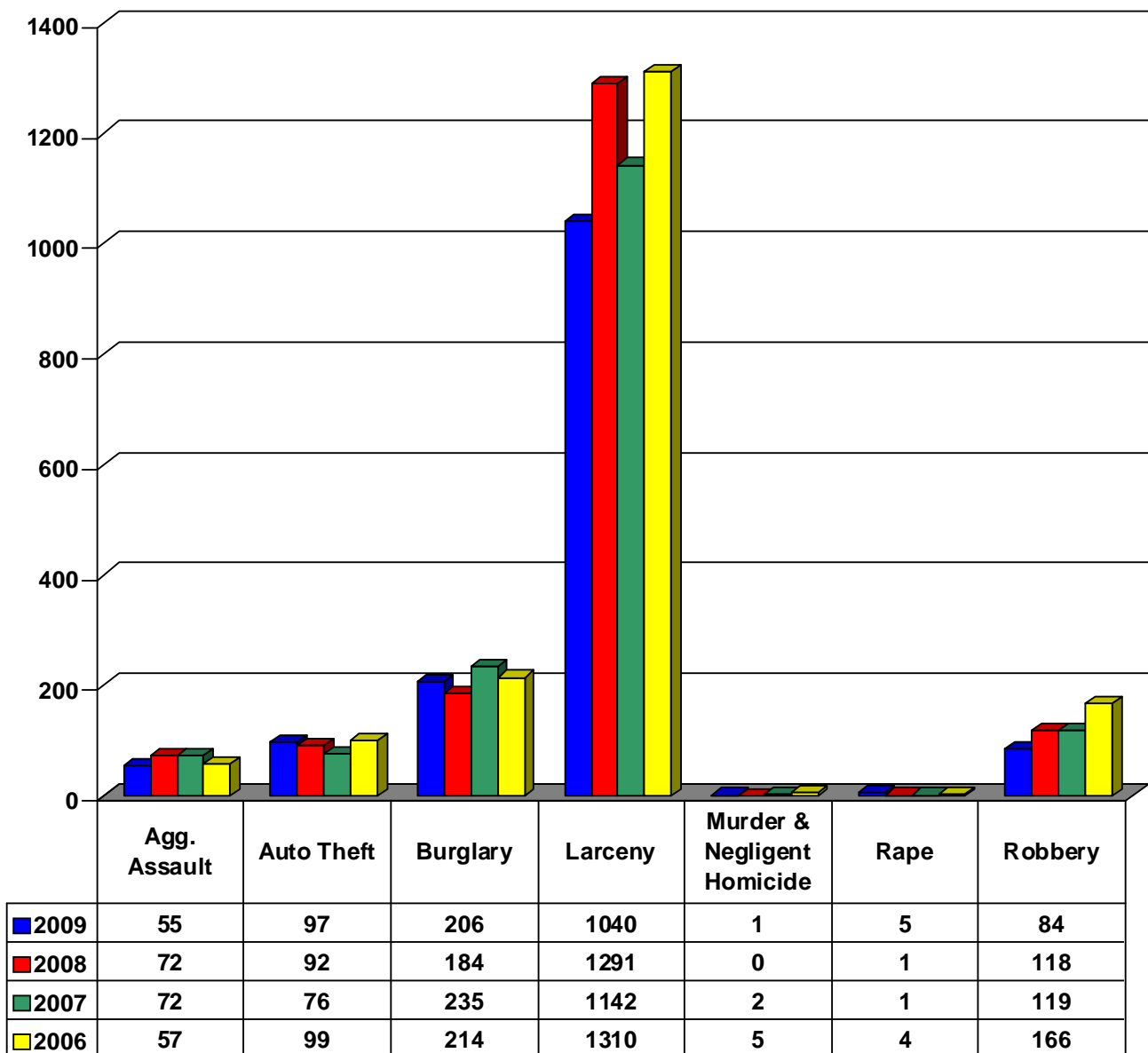
We recognize that our conduct, personal and professional is inseparable from the reputation of the Department and must be moral, sober and judicious

New Rochelle Police Department



COMPARISON STATISTICS

Part 1 Crime Changes



Percentage Change in Part 1 Crimes 2008-2009 and 2000-2009

	2009	2008	2007	2006	Percent Change in Rate 2008 -2009	Percent Change in Rate 2000 -2009
Aggravated Assault	55	72	72	57	-24%	-48%
Auto Theft	97	92	76	99	5%	-42%
Burglary	206	184	235	214	12%	-8%
Larceny	1040	1291	1142	1310	-19%	-17%
Murder & Negligent Homicide	1	0	2	5	100%	0%
Rape (forcible)	5	1	1	4	400%	17%
Robbery	84	118	119	166	-29%	-15%
Total	1488	1758	1647	1855	-15%	-20%



Explorers assisting P.A.C.T. with Food Drive



**TASER and
Tactical Training**



Total Arrests

	2009	2008	% Change
	2,218	2,477	-10%

Crime Arrest Index

Crime	2009	2008	% Change
Assault (Aggravated)	56	58	-3%
Burglary	55	33	67%
Larceny	221	266	-17%
Murder & Negligent Homicide	4	0	400%
Rape	3	2	50%
Robbery	50	53	-6%
Total	389	412	-6%

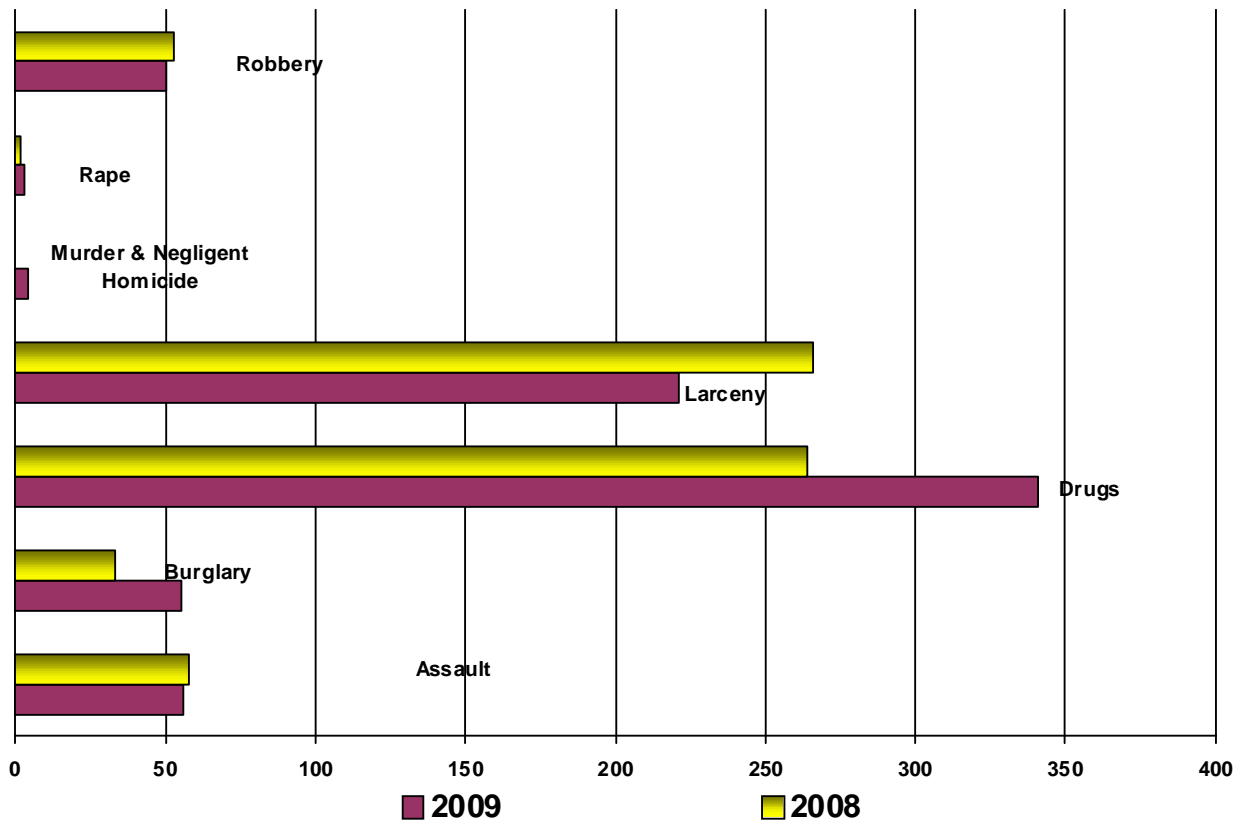
Drug Arrests

	2009	2008	% Change
Controlled Substances and Marijuana	341	264	29%

Juvenile Arrests

P.A.C.T.	2009	2008	% Change
Felonies	10	28	-64%
Misdemeanors	39	60	-35%
Other	2	3	-33%
Total	51	91	-44%
PATROL	22	14	57%
Total	73	105	-30%

Arrests 2009 vs. 2008



Annual Memorial and Awards Ceremony
May 2009



Traffic Enforcement

Violation	2009	2008	% Change
Full Stop	477	610	-22%
Red Light	479	636	-25%
Speeding	867	1,257	-31%
All Other	10,520	10,251	3%
Total	12,343	12,754	-3%

Parking Enforcement

	2009	2008	% Change
Parking Violation Summonses	89,271	105,130	-15%

Double Parking Enforcement

	2009	2008	% Change
Double Parking Violation Summonses	1,409	1,163	21%

Driving While Intoxicated Arrests

	2009	2008	% Change
DWI Arrests	90	101	-11%

City Code Enforcement

Violation	2009	2008	% Change
Dogs at Large	38	42	-10%
Public Drinking	413	505	-18%
Garbage & Litter	297	110	170%
Offensive Matter	138	245	-44%
Public Parks Curfew	312	255	22%
Noise	246	475	-48%
Peddlers	42	44	-5%
Motor Vehicle Nuisances	132	228	-42%
Icy Sidewalks	64	25	156%
Taxi	102	117	-13%
Alcohol Beverage Control	154	140	10%
Cabaret Licensing	4	3	33%
Warning Summonses	605	523	16%
Total	2,547	2,712	-6%

New Rochelle Police Department

2008 Crime Rates for all Cities from 70,000 to 80,000 in Population

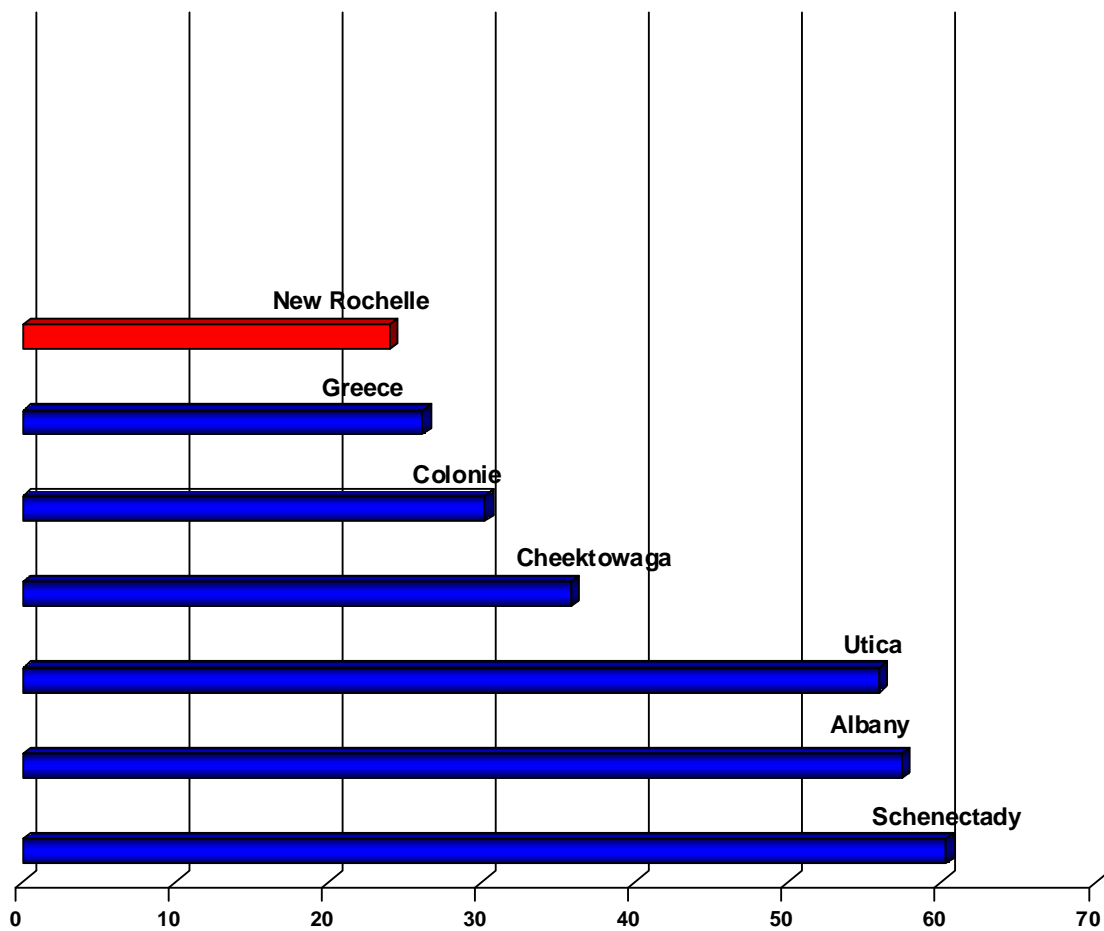
Rank	City	Population	Crime Index Total	Crime Rate Per 1000 Persons
1	Lake Forest, CA	75,637	1029	13.60
2	Chino Hills, CA	75,297	1270	16.87
3	O'Fallon, MO	78,837	1597	20.26
4	Danbury, CT	79,753	1735	21.75
5	New Rochelle	73,376	1758	23.93
6	Edmond, OK	74,329	1861	24.97
7	Baldwin Park, CA	78,031	2026	25.96
8	Napa, CA	74,420	2156	28.98
9	Cranston, RI	79,987	2320	29.00
10	Wyoming, MI	70,552	2053	29.10
11	Newport Beach, CA	79,821	2348	29.41
12	Mountain View, CA	70,401	2109	29.96
13	Buena Park, CA	79,431	2401	30.23
14	St. George, UT	74,356	2266	30.47
15	Lakewood, CA	78,894	2447	31.02
16	Redwood City, CA	73,369	2372	32.32
17	Bend, OR	77,898	2652	34.04
18	Hoover, AL	70,731	2426	34.30
19	Lynwood, CA	70,381	2422	34.41
20	Somerville, MA	74,012	2617	35.36
21	Bethlehem, PA	72,537	2647	36.49
22	Bellflower, CA	73,488	2689	36.59
23	Jacksonville, NC	75,770	2831	37.36
24	Union City, CA	70,407	2650	37.67
25	Westland, MI	79,944	3074	38.45
26	Pawtucket, RI	71,712	2766	38.57
27	Upland, CA	72,929	2906	39.85
28	Fayetteville, AR	73,999	3091	41.77
29	Bloomington, IN	72,337	3050	42.16
30	Brooklyn Park, MN	71,891	3060	42.56
31	Redlands, CA	70,730	3024	42.75
32	Lynchburg, VA	71,805	3086	42.98
33	Medford, OR	73,019	3164	43.31
34	Deerfield Beach, FL	73,665	3215	43.64
35	Southfield, MI	75,024	3575	47.65
36	Lorain, OH	70,302	3460	49.22
37	Merced, CA	78,598	4065	51.72
38	Largo, FL	72,298	3772	52.17
39	St. Joseph, MO	76,377	3987	52.20
40	Hemet, CA	71,789	3783	52.69
41	Santa Fe, NM	74,496	3978	53.34
42	Baytown, TX	70,596	3781	53.56
43	New Britain, CT	70,553	3792	53.75
44	San Leandro, CA	77,474	4407	56.88
45	Bellingham, WA	78,804	4539	57.60
46	Bryan, TX	72,815	4238	58.20
47	Edinburg, TX	71,734	4591	64.00
48	Asheville, NC	74,215	4803	64.72
49	Youngstown, OH	72,887	4763	65.35
50	Melbourne, FL	77,286	5171	66.91

Source: USDOJ Crime in the United States 2008

2008 Crime Rate Per 1000 for Similar Municipalities in New York

City	Population	Part 1 Crimes	Per 1,000
New Rochelle	73,376	1758	23.93
Greece	92,932	2425	26.10
Colonie	78,272	2364	30.20
Cheektowaga	78,303	2804	35.81
Utica	58,234	3257	55.93
Albany	94,152	5408	57.44
Schenectady	61,506	3708	60.29

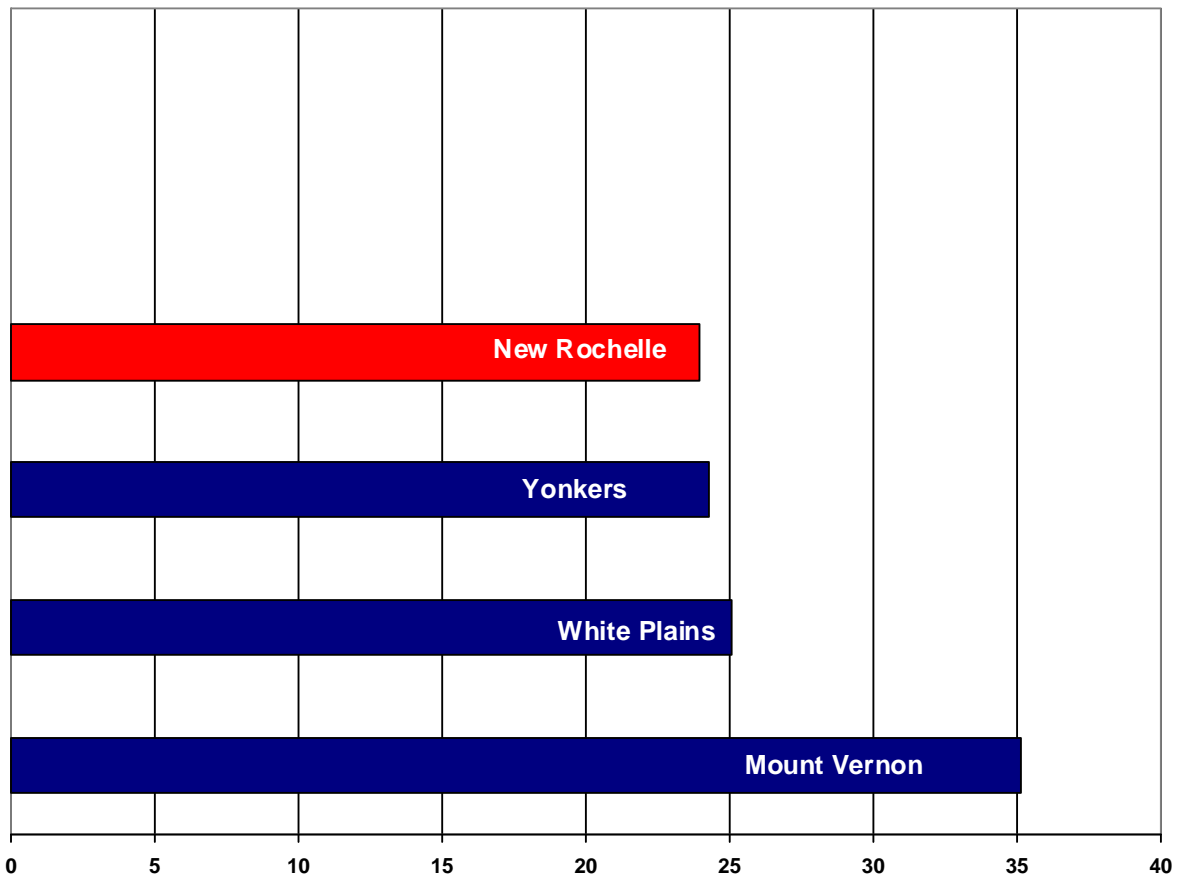
2008 Crime Rate Per 1000



2008 Crime Rate Per 1000 For Cities in Westchester

City	Part 1 Crimes	Per 1,000
New Rochelle	1758	23.93
Yonkers	4840	24.25
White Plains	1453	25.08
Mount Vernon	2383	35.14

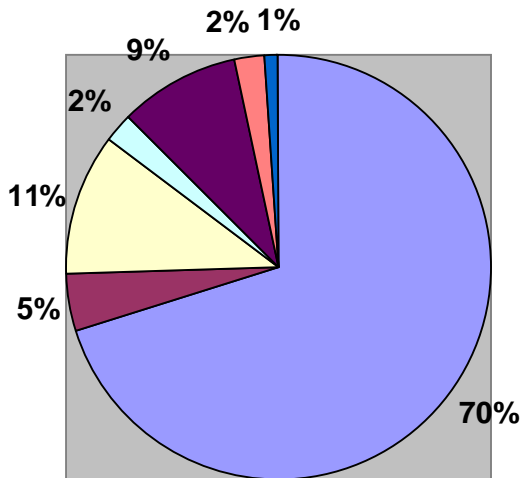
2008 Crime Rate Per 1000



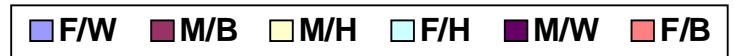
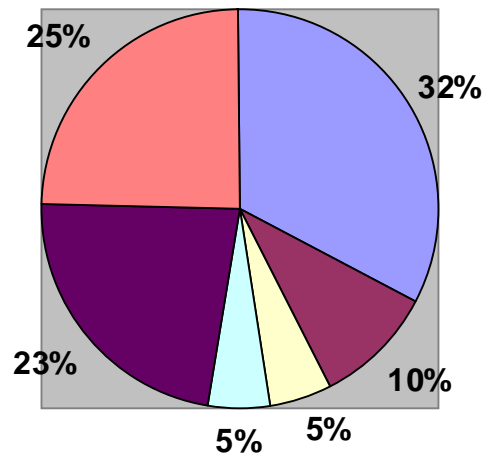
2009 Department Demographics

	M/W	F/W	M/B	F/B	M/H	F/H	M/A	M/I	TOTAL
Police Commissioner	1								1
Deputy Police Commissioner	1								1
Captain	3								3
Lieutenant	10								10
Sergeant	16	2	7		1				26
Detective	25		7	2	2	2			38
Police Officer	69	6	5	2	13	2	2		99
Total Sworn	125	8	19	4	16	4	2		178
Community Service Officer	11	7	5	5	3				31
Civilian Employee	1	6		3					10
School Crossing Guard	2	7	1	6		3			19
Total Non-Sworn	14	20	6	14	3	3			60
Total Employees	139	28	25	18	19	7	2	0	238

Percentages for Total Sworn Officers



Percentages for Total Non-Sworn Employees



Personnel

Sworn Personnel by Age

Age of Officer	Number of Officers
21-24	3
25-29	27
30-35	28
36-40	39
41-50	68
51-65	13
Average Age	39.6

Sworn Personnel by Longevity

Years	Number of Officers
> 1	0
1 - 2	19
3 - 5	25
6 - 10	29
11 - 15	30
16 - 20	47
21 +	28
Average Longevity	13.1



2009 Citizen Police Academy Harbor Tour

New Rochelle Police Department
Training Unit
Lieutenant Cosmo Costa, Training Director
Sergeant Calvin McGee, Training Supervisor
Cover Photo by Sergeant Robert Torr
Do not reproduce without the permission of the Training Unit

