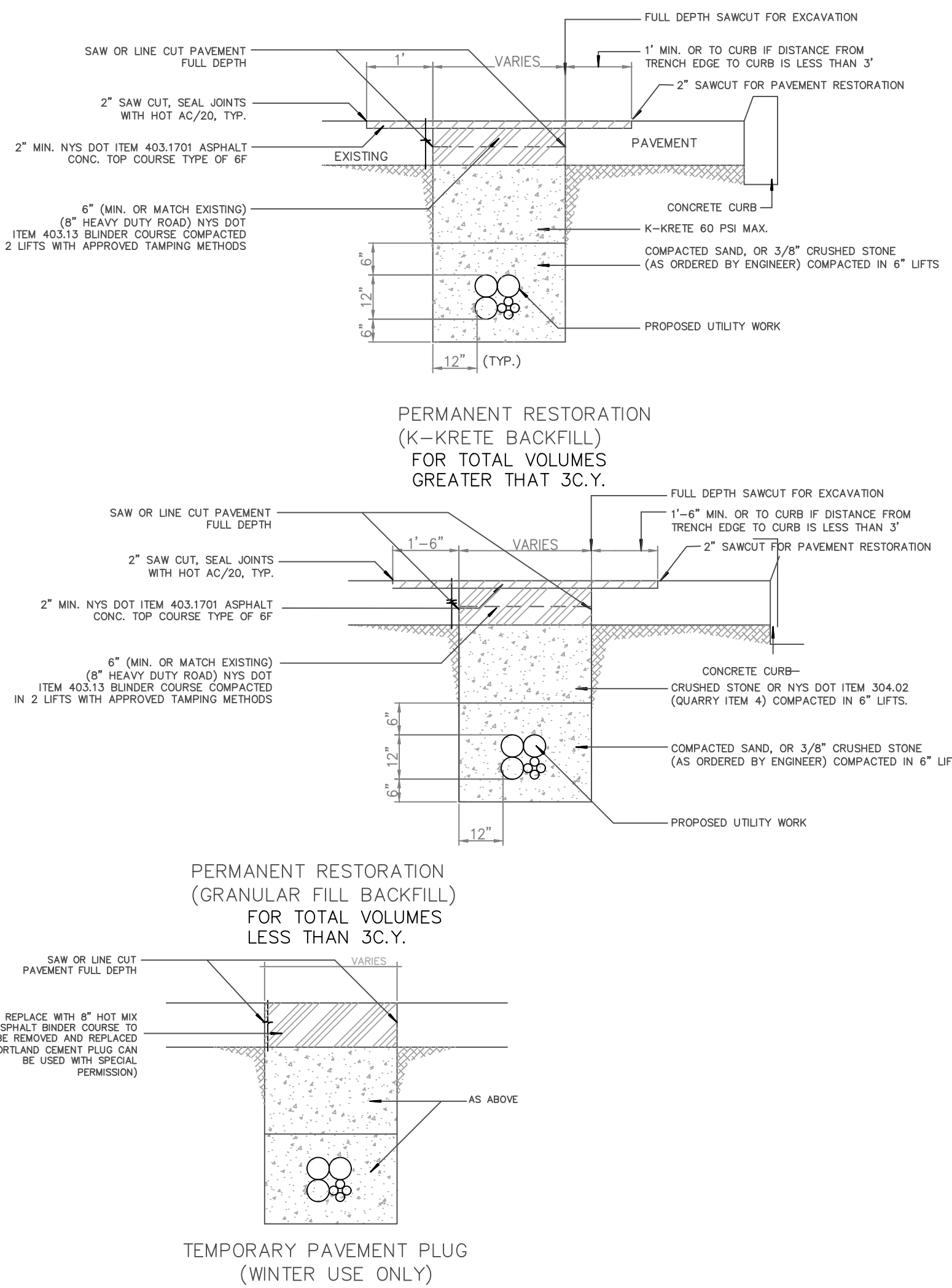
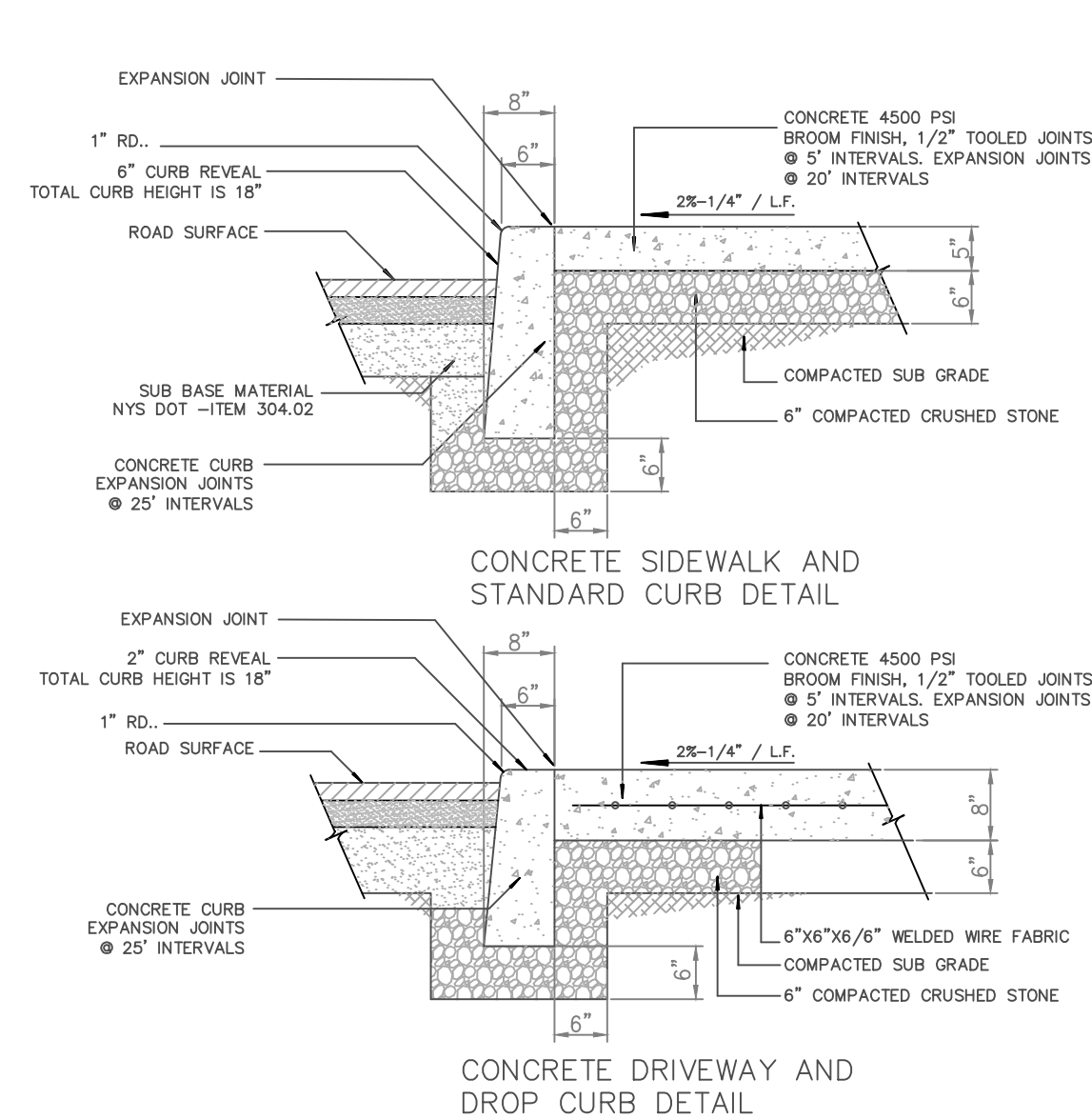


**TYPICAL TRENCH SECTIONS AND PAVEMENT REPLACEMENT DETAILS FOR UTILITY INSTALLATIONS**

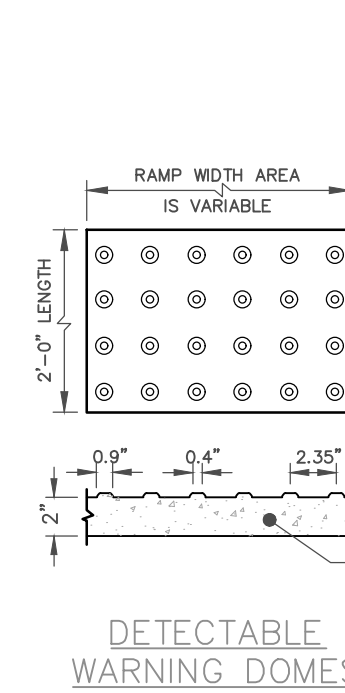


**CONCRETE SIDEWALK AND CURB RESTORATION DETAIL**

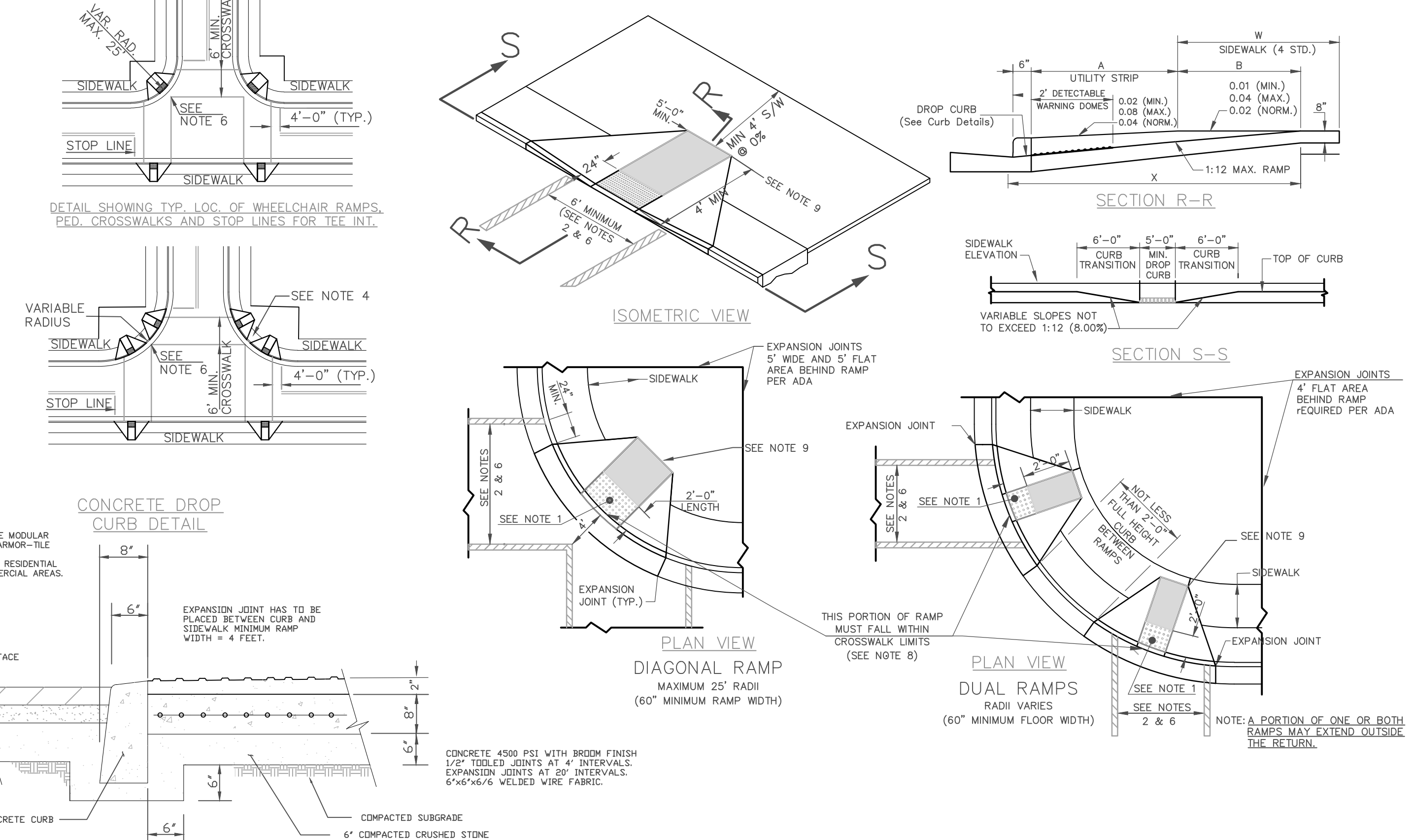


- GENERAL NOTES:**
- CONTRACTOR MUST HAVE INSPECTION PRIOR TO PLACING GRAVEL OR POURING CONCRETE.
  - NO WORK TO BE DONE ON WEEKENDS OR HOLIDAYS UNLESS INSPECTOR IS NOTIFIED AND ARRANGEMENTS HAVE BEEN MADE WHERE AN INSPECTOR CAN BE PRESENT AT THE CONTRACTOR'S EXPENSE.
  - ENTIRE WORK AREA TO BE KEPT CLEAN AND PROPERLY BARRICADED. A MINIMUM FOUR FEET OF PEDESTRIAN RIGHT OF WAY IS TO BE PROVIDED AND MAINTAINED THROUGHOUT THE CONSTRUCTION AREA. ALL DWELLINGS, UNITS AND BUSINESSES MUST HAVE PROPER ACCESS.
  - NO ASH IS ALLOWED IN PLACE OF GRAVEL.
  - ALL UTILITY CASTINGS MUST BE FLUSH WITH SIDEWALK SURFACE. NO TRIPPING HAZARDS OR ENCROACHMENTS ARE PERMITTED.
  - NO TREE ROOTS ARE TO BE DAMAGED, CUT OR REMOVED WITHOUT CITY TREE INSPECTORS APPROVAL.

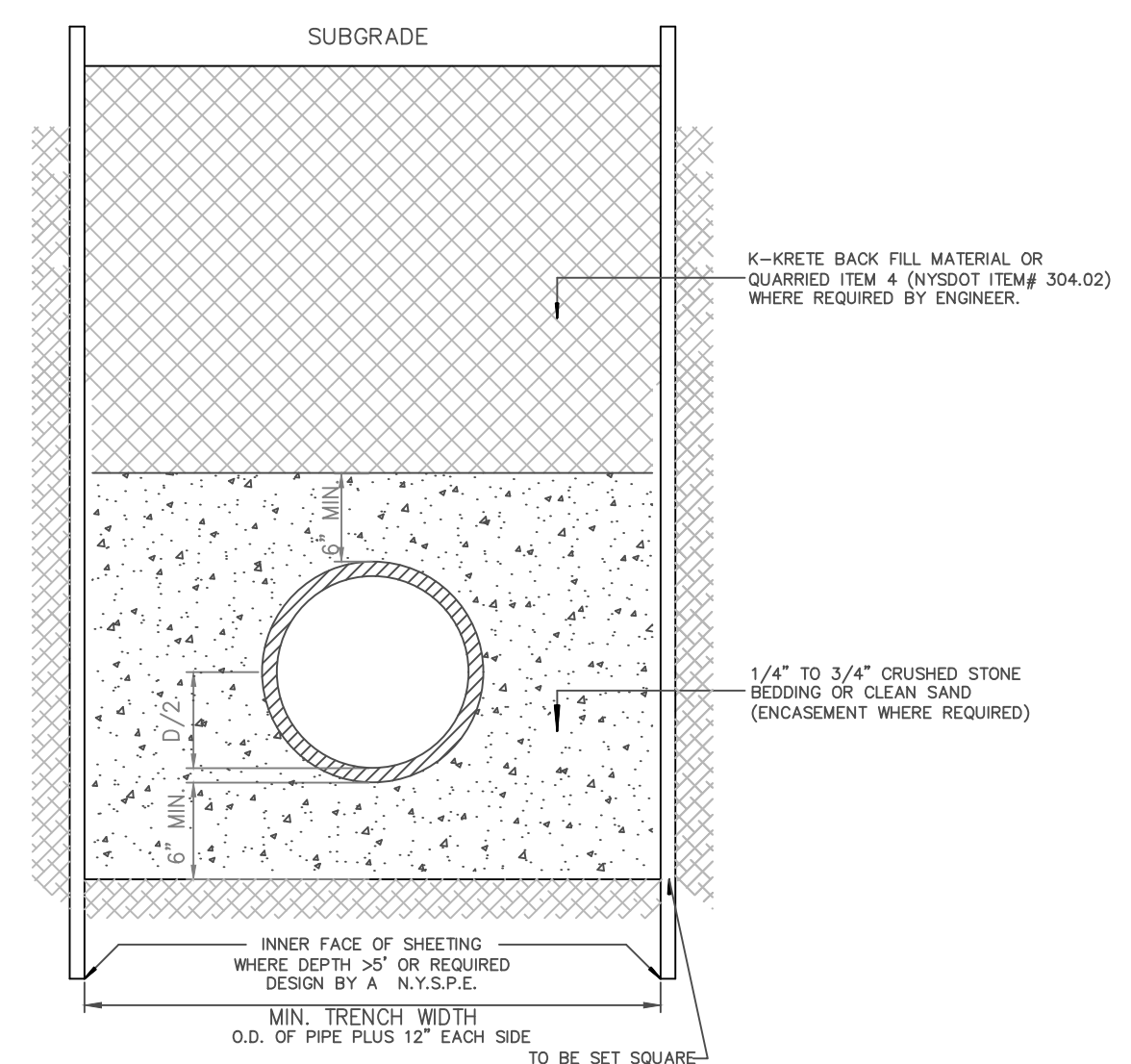
- NOTES:**
- DETECTABLE WARNING DOMES SHALL COVER 2'-0" IN LENGTH AND FULL WIDTH OF THE RAMP FLOOR.
  - CROSSWALK WIDTHS AND CONFIGURATION VARY BUT MUST CONFORM TO TRAFFIC DESIGN STANDARDS. PLACE ALL PAVEMENT MARKINGS IN ACCORDANCE WITH THE LATEST EDITION OF THE (MUTCD) MANUAL OF UNIFORM TRAFFIC CONTROL DEVICES.
  - PROVIDE WHEELCHAIR RAMPS AT LOCATIONS AS SHOWN ON THE PLANS OR AS DIRECTED BY THE ENGINEER. LOCATE WHEELCHAIR RAMPS AS DIRECTED BY THE ENGINEER WHERE EXISTING UTILITIES MAY INTERFERE. WHERE TWO RAMPS ARE INSTALLED PLACE NOT LESS THAN 2 FEET OF FULL HEIGHT CURB BETWEEN THE RAMPS. PLACE DUAL RAMPS AS NEAR PERPENDICULAR TO THE TRAVEL LANE BEING CROSSED AS POSSIBLE.
  - DO NOT EXCEED 0.08 (1:12) SLOPE ON THE WHEELCHAIR RAMP.
  - CONSTRUCT WHEELCHAIR RAMPS 48" WIDE X 48" LONG FOR DUAL RAMPS AND 60" X 60" LONG WIDE FOR DIAGONAL RAMPS.
  - PLACE A 3/4" EXPANSION JOINT WHERE THE CONCRETE WHEELCHAIR RAMP JOINS THE CURB AND AS SHOWN ON STANDARD DETAIL.
  - COORDINATE THE CURB CUT AND THE PEDESTRIAN CROSSWALK LINES SO THE FLOOR OF THE WHEELCHAIR RAMP WILL FALL WITHIN THE PEDESTRIAN CROSSWALK LINES. PLACE DIAGONAL RAMPS WITH FLARED SIDES SO 2/4" OF FULL HEIGHT CURB FALLS WITHIN THE CROSSWALK MARKINGS ON EACH SIDE OF THE FLARES.
  - TERMINATE PARKING A MINIMUM OF 20 FEET BACK OF PEDESTRIAN CROSSWALK.
  - THE DETECTABLE WARNING PAD MUST CONTRAST VISUALLY WITH ADJOINING SURFACES, EITHER LIGHT-ON-DARK OR DARK-ON-LIGHT; DARK GRAY IN RESIDENTIAL AREAS AND YELLOW IN COMMERCIAL/INDUSTRIAL AREAS.



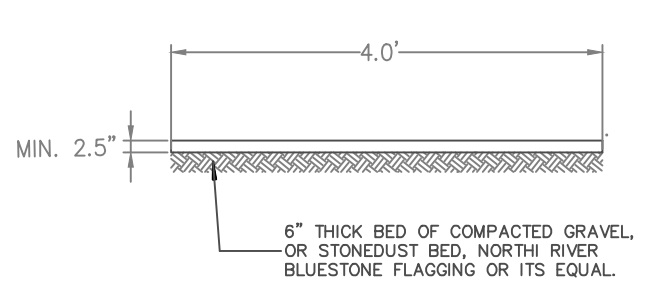
**HANDICAP RAMP DETAIL**



**TYPICAL TRENCH SECTIONS AND BACKFILL DETAILS FOR CITY OF NEW ROCHELLE UTILITY EXTENSIONS**

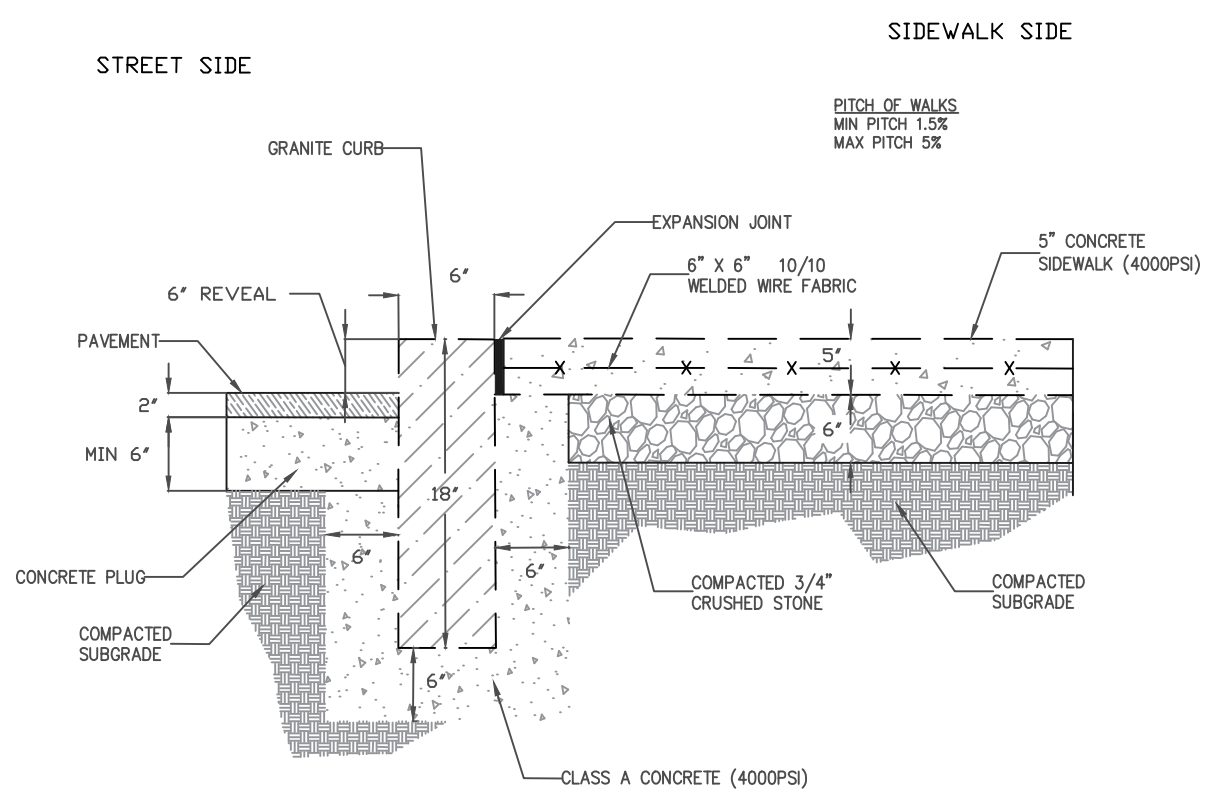


**BLUESTONE SIDEWALK**



- GENERAL NOTES:**
- NEW BLUESTONE FLAGS ARE TO BE PLACED WHERE THERE ARE INSUFFICIENT FLAGS AVAILABLE TO BE REPAID, OR AS DIRECTED BY THE ENGINEER. THEY SHALL NOT BE LESS THAN 4 FT WIDE, NOT LESS THAN 10 SQUARE FEET IN AREA.
  - REPAID FLAGS SHALL CONSIST OF EXISTING BLUESTONE IN PLACE, ACCEPTABLE IN CONDITION, SQUARE OR RECTANGULAR IN SHAPE, REMOVED AND REPAID AS DIRECTED BY THE ENGINEER. THEY SHALL NOT BE LESS THAN 2 FEET WIDE, NOT LESS THAN 5 SQUARE FEET IN AREA.
  - FLAGS REMOVED IN ACCEPTABLE CONDITION ARE TO BE DELIVERED TO A DESIGNATED CITY YARD AFTER COMPLETION OF WORK.

**GRANITE CURB**



IN CHARGE OF:    JM     
 MADE BY:    DM     
 CHECKED BY:    JM   

**UNAUTHORIZED ALTERATION OR ADDITIONS TO THIS MAP IS A VIOLATION OF SECTION 7209 SUB-SECTION 2, OF THE STATE EDUCATION LAW.**

CITY OF NEW ROCHELLE DEPARTMENT OF PUBLIC WORKS		PROJECT NUMBER	CONTRACT NUMBER
<b>STANDARD DETAILS FOR CONSTRUCTION</b>		SHEET NO. 3 OF 3	SCALE: NTS
		DATE: 06/02/2016	REV. NO. 0
		DRAWING NO.	